



ECE 11

Lyon, France

SECOND CIRCULAR

11th European Conference on Echinoderms (ECE11)

October 16–20, 2023

Lyon, France



After previous successful editions in Brussels (Belgium, 1979 and 1989), Lecce (Italy, 1991), London (UK, 1995), Milano (Italy, 1998), Banyuls (France, 2001), Göttingen (Germany, 2010), Portsmouth (UK, 2014), Sopot (Poland, 2016) and Moscow (Russia, 2019), we are very pleased to invite you to the 11th European Conference on Echinoderms (ECE11), which will be held in Lyon (France) next autumn.

This meeting will be the first 'in person' echinoderm meeting after an almost four-year hiatus due to the covid pandemics, and we look forward to seeing you all again!

Chairs of the Organizing and Scientific committees

Bertrand Lefebvre (Lyon)

Thomas Saucède (Dijon)

Organizing Committee

Blandine Bartschi (Lyon)

Raffaella Cattaneo (Villefranche-sur-Mer)

Erwan Courville (Dijon)

Jenifer Croce (Villefranche-sur-Mer)

Christophe Dupichaud (Lyon)

Pauline Guenser (Lyon)

Charlène Guillaumot (Dijon)

Quentin Jossart (Dijon)

Bernard Kaufmann (Lyon)

Sébastien Motreuil (Dijon)

Vincent Perrier (Lyon)

Louanne Poumarat (Dijon)

Emmanuel Robert (Lyon)

Jérôme Thomas (Dijon)

Scientific Committee

Marie Albéric (Paris, France)

Omri Bronstein (Tel-Aviv, Israel)

Daniela Candia Carnevali (Milan, Italy)

Anne Chenuil (Marseille, France)

Jenifer Croce (Villefranche-sur-Mer, France)

Bruno David (Paris, France)

Chantal De Ridder (Brussels, Belgium)

Philippe Dubois (Brussels, Belgium)

Marc Eléaume (Paris, France)

Tim Ewin (London, UK)

Marine Fau (Washington, USA)

Przemysław Gorzelak (Warsaw, Poland)

Charlène Guillaumot (Dijon, France)

José Carlos Hernandez (Tenerife, Spain)

Quentin Jossart (Dijon, France)

Andreas Kroh (Vienna, Austria)

Maria Eugenia Majón-Cabeza (Malaga, Spain)

Frédéric Marin (Dijon, France)

Loïc Michel (Liege, Belgium)

Camille Moreau (Brussels, Belgium)

Elise Nardin (Toulouse, France)

James Nebelsick (Tübingen, Germany)

Didier Néraudeau (Rennes, France)

Martina Nohejlová (Prague, Czech Republic)

Mike Reich (Braunschweig, Germany)

Farid Saleh (Lausanne, Switzerland)

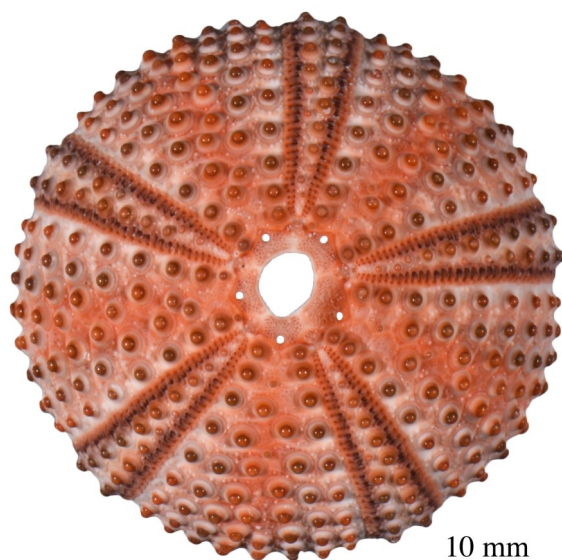
Sabine Stöhr (Stockholm, Sweden)

Jeffrey Thompson (Southampton, UK)

Ben Thuy (Luxemburg, Luxembourg)

Loïc Villier (Paris, France)

Samuel Zamora (Zaragoza, Spain)



PROVISIONAL SCHEDULE

Pre-conference excursion to Villefranche-sur-Mer marine station: October 11th–15th, 2023

Registration, icebreaker: October 16th, 2023

Indoor scientific sessions: October 16th–17th and 19th–20th, 2023

Mid-conference excursion in Ardèche (la Voulte Lagerstätte): October 18th, 2023

Gala Dinner: October 19th, 2023

CONFERENCE

The conference will consist of oral sessions, poster sessions, and workshops. Pre- and mid-conference excursions are also planned. The official language of the meeting is **English**.

Scientific sessions (Oct. 16th–17th and 19th–20th, 2023)

Oral presentations (keynote lectures and regular talks) will be organized into 12 thematic sessions and workshops.

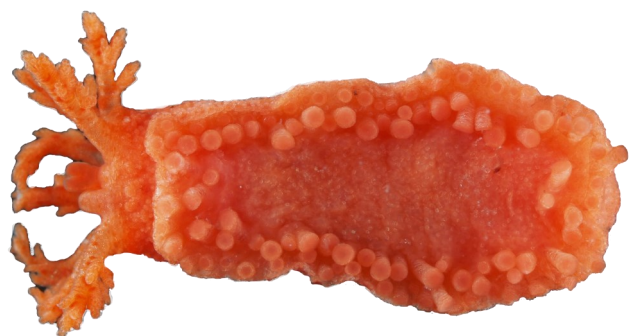
1. *Applied Biomedicine and Biomimetics* – Exploiting Echinoderms as models and guides in bioinspired applied research for developing marine-derived drugs, innovative materials, design objects or technological processes on macro-, micro- and nanoscale.
2. *Embryonic and Larval Development* – Upon fertilization, the ontogenetic development of echinoderms starts with the embryonic stages and continues with the larval life. During these periods, several fundamental events take place that are essential for the correct development of the animal and its survival, such as cell division, cell fate specification, morphogenetic movements, and organ development.
3. *Post-Metamorphosis Development* – Contributions dealing with all aspects of post-metamorphosis development of echinoderms (e.g. biomineralization, regeneration, autotomy) are welcome in this session.
4. *Collections and History of Echinoderm Research* – Collections have always been central for systematics research, which in turn helps understand all aspects of biodiversity. We want to consider papers focusing on Museum specimens as essential to understanding biodiversity turnover in time and space as well as papers using new techniques, e.g. tomography or NGS, applied to collection specimens to solve key issues in echinoderm biodiversity. We will also consider papers reflecting on the history of echinoderm research as it has developed in conjunction to Museum and amateur collections.
5. *Modelling and Numerical Approaches* – Approaches related to physiological modeling, distribution/niche modelling, spatial analytics or dispersal modelling, imagery, morphometric analyses (structural, biomimeticism), functional morphology (finite-element analyses) or computational/quantitative of fluid dynamics (CFD).
6. *Ecophysiology, ecotoxicology, and effects of global change stressors* – From fundamental physiology of echinoderms to the interactions of physiology and ecology in present and future conditions affected by global change; dynamics and effects of contaminants at all biological levels.

7. *Functional ecology and morphology* – This session will be as broad and integrative as possible, and welcome talks from multiple disciplines. Does your research focus on the role of echinoderms in marine ecosystems, from the tidal zone to abyssal plains? Are you interested in how echinoderms respond to changes in their environment, how their biology influences their environment, or both? Or maybe you're researching the place of a particular echinoderm taxon among the food web it is part of, and how it interacts with other taxa through ecological networks? Alternatively, you might be passionate about echinoderm morphology, and try to understand how anatomical traits modulate their biology, ecology, or adaptive potential. If you recognized yourself in any or all of the abovementioned topics, then you'll feel at home in this session!
8. *Biogeography: past, present and future in a changing world (phylogeography and palaeobiogeography)* – Documenting distribution patterns of echinoderms and highlighting their affinities among geographic regions based on either classical taxonomy, molecular tools or fossil records.
9. *Systematics* – This session will consider all contributions dealing with species delimitation, integrative taxonomy, morphology, phylogeny and phylogenomics.
10. *Palaeontology* – Reconstruction of the past history of echinoderms with respect to evolution, paleoecology, taphonomy, etc.
11. *Revision of the Treatise on Invertebrate Paleontology (volumes S, T and U)* – This workshop will present the ongoing progresses and difficulties; contributions dealing with specific chapters are also welcome.
12. *General Session* – This session will include all contributions not fitting in the other ones.

Posters will be on display during the whole conference, and poster sessions will take place during lunch and coffee breaks.

Keynote lectures

Seven keynote lectures by **Jenifer Croce** (Villefranche-sur-Mer, France), **Philippe Dubois** (Brussels, Belgium), **Rich Mooi** (San Francisco, USA), **James Nebelsick** (Tübingen, Germany), **Marie Nonclercq** (Toulouse, France), **Tim O'Hara** (Melbourne, Australia) and **Paola Oliveri** (London, UK) are scheduled during the conference.



Abstracts

Abstracts of oral presentations and posters will be compiled in a printed abstract volume. Additionally, all participants will also receive a pdf version of this volume.

Deadline for the submission of abstracts is **May 15th, 2023**. All abstracts will be reviewed by the Scientific Committee. Final decisions on abstracts will be taken before **June 15th, 2023**. The Scientific Committee reserves the right to propose a change of the communication type (oral or poster) and session originally proposed by the authors.

Abstracts have to be uploaded online at

<https://ece11.univ-lyon1.fr>

Abstracts have to follow the template available below and also online at

<https://ece11.univ-lyon1.fr/en/pages/ece-11-2023-abstract-submission>

Abstract template

Please tick the appropriate box:

☐ keynote

☐ regular talk

☐ poster

11th European Conference on Echinoderms

Bertrand LEFEBVRE¹ & Thomas SAUCÈDE²

¹ UMR CNRS 5276 LGLTPE, Université Lyon 1, Villeurbanne, France. bertrand.lefebvre@univ-lyon1.fr

² UMR CNRS 6282 Biogéosciences, Université de Bourgogne, Dijon, France. thomas.saucede@u-bourgogne.fr

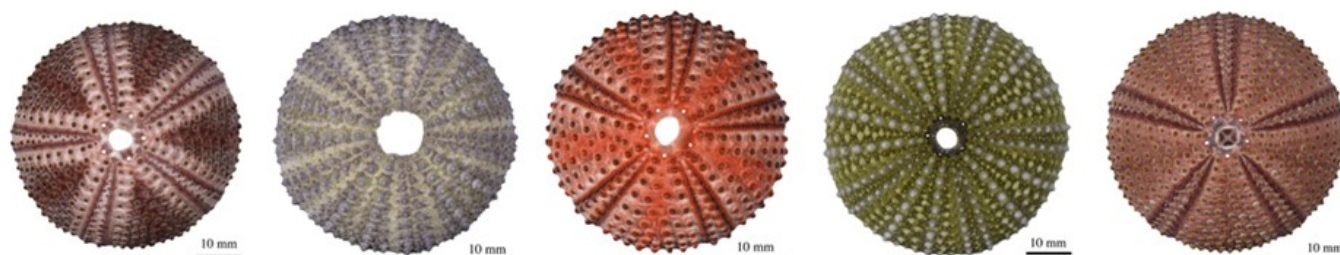
This is a template for abstract submission to the 11th European Conference on Echinoderms. Please use Times New Roman font throughout. Titles (in bold, size 14), authors (size 12) and their affiliations (size 10) should be centred. Abstracts should be written in size 12 and not exceed one A4 page, with 2.54 cm wide margins. All taxonomic names should be in italics. Abstracts can include one illustration (and its caption). Citing references, if necessary, should be restricted to a strict minimum and then following the format indicated below (Saucède, 2020; Lefebvre & Saucède, 2023; Saucède *et al.*, 2023).

References

Lefebvre, B. & Saucède, T. 2023. 11th European Conference on Echinoderms. *Journal Name*, **23**, 16–20.

Saucède, T. 2020. 11th European Conference on Echinoderms, in: Author, A. & Author, B. (eds.), *European Conferences on Echinoderms*. Printer, City, 356–360.

Saucède, T., Croce, J. & Lefebvre, B. 2023. *Excursion to the Villefranche-sur-Mer Marine Station*. Printer, City, 45 pp.



Proceedings of the conference

The proceedings of the conference will be published free of charge in a thematic volume of the journal ***Cahiers de Biologie Marine***, which is an international, indexed and peer-reviewed publication (IF = 0.527) edited by the Roscoff Marine Station (France). This journal has already edited the proceedings of the 14th International Conference on Echinoderms, held in Brussels in 2012 (*Cahiers de Biologie Marine*, volume 54, published in 2013).

The deadline for manuscript submission is **March 31st 2024**.



PRE-CONFERENCE EXCURSION TO VILLEFRANCHE-SUR-MER MARINE STATION (October 11th-15th, 2023)



Overlooking one of the most beautiful harbors in the world, the city of Villefranche-sur-Mer (situated on the French Riviera, Côte d'Azur, southern France, between Nice and Monaco) offers an exceptional and unexpected setting with its 16th century Citadel, a historic monument housing the City Hall and cultural center (Museums, Auditorium, Théâtre de Verdure), Royal Port of "Darse", chapels (Saint-Pierre de Villefranche-sur-Mer chapel decorated by Jean Cocteau, Saint Elisabeth, Saint Elme and Saint Michael's church), and medieval and magical "rue Obscure" street. For those interested, the excursion may include a visit to the nearby Leyrens islands and Oceanographic Museum of Monaco.

Established in 1885 by Alexis de Korotneff (University of Kiev) and Carl Vogt (University of Geneva), the Villefranche-sur-Mer marine station (Institut de la Mer de Villefranche - IMEV) operates and maintains one of the three longest-running deep marine environmental monitoring stations in the world as well as an important long-term pelagic observation program. Research topics include developmental biology, pelagic and coastal oceanography, biological and biogeochemical cycles in marine environment, carbon cycle, phytoplankton production, and biological diversity of zooplankton communities.

Marine research facilities include access to the RV *Sagitta II* ship (trawler) for sea trip (plankton nets, oceanographic instruments for biological and physical monitoring), scuba diving for access to marine ecosystems and echinoderm sampling, laboratories, technological platforms, and climate control rooms with access to all basic research equipment (molecular biology, microscopic imaging).

As the number of places to the pre-conference excursion to Villefranche-sur-Mer is limited (**20 people max**), pre-registration will be on a first-come, first-served basis, according to the reservation order. Definitive registration fees to the pre-conference excursion will be announced as soon as possible. They will depend on the number of participants and the selected options.

Please fill in the pre-registration form below and send it back to:

thomas.saucede@u-bourgogne.fr

PRE-REGISTRATION FORM **VILLEFRANCHE-SUR-MER PRE-CONFERENCE EXCURSION**

First Name, SURNAME:

- ☐ Transport requested from Lyon to Villefranche-sur-Mer (and return)
- ☐ Will travel to Villefranche-sur-Mer on my own
- ☐ On-site catering & accommodation requested (individual to double/triple rooms)

Requested species to be sampled (* rare, uncommon or hardly accessible) :

- | | | | | |
|---|---|---|---|--|
| <input type="checkbox"/> Asteroidea | <input type="checkbox"/> Echinoidea | <input type="checkbox"/> Holothuroidea | <input type="checkbox"/> Ophiuroidea | <input type="checkbox"/> Crinoidea |
| <input type="checkbox"/> <i>Asterina</i>
<i>panceri</i> * | <input type="checkbox"/> <i>Arbacia lixula</i> | <input type="checkbox"/> <i>Holothuria</i>
<i>sanctori</i> | <input type="checkbox"/> <i>Astropartus</i>
<i>mediterraneus</i> * | <input type="checkbox"/> <i>Antedon</i>
<i>mediterranea</i> |
| <input type="checkbox"/> <i>Astropecten</i>
<i>aurantiacus</i> | <input type="checkbox"/> <i>Brissus</i>
<i>unicolor</i> * | <input type="checkbox"/> <i>Holothuria</i>
<i>tubulosa</i> | <input type="checkbox"/> <i>Ophiocomina</i>
<i>nigra</i> | |
| <input type="checkbox"/> <i>Astropecten</i>
<i>bispinosus</i> | <input type="checkbox"/> <i>Centrostephanus</i>
<i>longispinus</i> | <input type="checkbox"/> <i>Holothuria</i>
<i>forskali</i> | <input type="checkbox"/> <i>Ophioderma</i>
<i>longicauda</i> * | |
| <input type="checkbox"/> <i>Astropecten</i>
<i>spinulosus</i> * | <input type="checkbox"/> <i>Cidaris cidaris</i> * | <input type="checkbox"/> <i>Holothuria poli</i> | <input type="checkbox"/> <i>Ophiura</i>
<i>ophiura</i> * | |
| <input type="checkbox"/> <i>Chaetaster</i>
<i>longipes</i> | <input type="checkbox"/> <i>Echinus acutus</i> * | <input type="checkbox"/> <i>Parastichopus</i>
<i>regalis</i> * | | |
| <input type="checkbox"/> <i>Coscinasterias</i>
<i>tenuispina</i> | <input type="checkbox"/> <i>Echinus melo</i> * | | | |
| <input type="checkbox"/> <i>Echinaster</i>
<i>sepositus</i> | <input type="checkbox"/> <i>Paracentrotus</i>
<i>lividus</i> | | | |
| <input type="checkbox"/> <i>Hacelia</i>
<i>attenuata</i> | <input type="checkbox"/> <i>Sphaerechinus</i>
<i>granularis</i> | | | |
| <input type="checkbox"/> <i>Marthasterias</i>
<i>glacialis</i> | | | | |
| <input type="checkbox"/> <i>Ophidiaster</i>
<i>ophidianus</i> | | | | |

Requested facilities :

- ☐ Ship (trawler) for sea trip (plankton nets only)
- ☐ Scuba diving for access to marine ecosystems and echinoderm sampling on your own (in this case, can you please provide certifications and diving gears needed)
- ☐ Molecular biology
- ☐ Microscopic imaging (SEM, confocal,...)
- ☐ Wet lab (running sea water, aquariums)
- ☐ Dry lab

Will be interested in attending thematic presentations

- ☐ Imaging microscopy (confocal, SPIM, SEM, ...)
- ☐ Quantitative microscopy (Zooscan, PIQ, ...)
- ☐ Presentation of the Villefranche Marine station
- ☐ Presentation of the European Marine Biological Resource Centre (EMBRC) Research Infrastructure

Proposed day trips & city tour

- ☐ Villefranche-sur-Mer city tour (evening)
- ☐ Day trip to the close Lerins islands (snorkeling, ...)
- ☐ Visit of Oceanographic Museum of Monaco (on Sunday)

MID-CONFERENCE ACTIVITIES (OCTOBER 18TH, 2023)

Four activities will be proposed to participants (and accompanying persons) on Wed. 18 Oct.

(1) Access to all facilities and visit of the Zoological Collections of Lyon 1 University. The University of Lyon Zoological collections are world-famous for hosting the collections of Pr. René Koehler (1860–1931), comprising over 800 vials containing echinoderm specimens (including 8 holotypes) collected during the sea campaign of the Caudan (1895) in the Gulf of Gascogne.

This activity is free, but registration is compulsory and limited to 15 participants on a first-come, first-served basis, according to the reservation order.



(2) Access to all facilities and visit of the Palaeontological Collections of Lyon 1 University. These collections are the second largest ones in France (after the Muséum national d'Histoire naturelle in Paris). They are hosting over 1,800 types and figured specimens of fossil echinoderms (e.g. Barrande, Caillet, Cotteau, Lissajous, Sayn, Thorall, de Verneuil, Vizcaino collections).

This activity is free, but registration is compulsory and limited to 15 participants on a first-come, first-served basis, according to the reservation order.



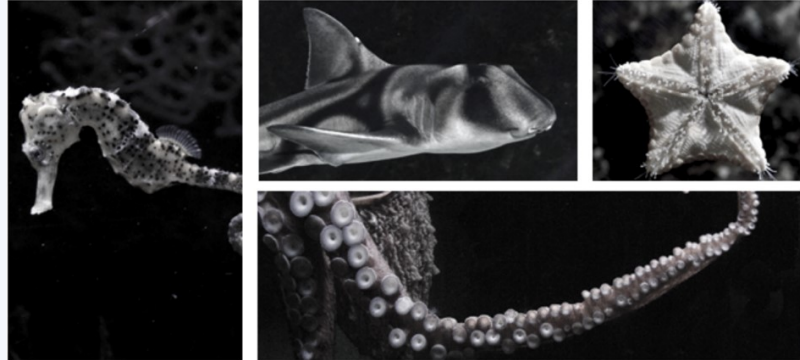
Please note that the Zoological and Palaeontological collections will be both closely associated to the conference, and will remain accessible to all participants before, during and after the meeting.



(3) Guided tour of the **Lyon Aquarium**

(<https://www.aquariumlyon.fr/en/>)

Registration (15 €) is limited to 15 participants, on a first-come, first-served basis, according to the reservation order.



(4) One-day field excursion to Ardèche. This one-day excursion will bring all the participants to visit the palaeontological collections of the Musée de l'Ardèche (<https://museum-ardeche.fr/en/>), which is hosting iconic fossils from the famous Callovian (Middle Jurassic) La Voulte Lagerstätte. Several fossiliferous sites yielding Jurassic echinoderms (mostly crinoids and ophiuroids) will be also visited, including the La Voulte Lagerstätte itself. A convivial stop (wine tasting) in a local cellar is also scheduled.

Registration (80 €) is limited to 60 participants, on a first-come, first-served basis, according to the reservation order.



Photographie : Bernard Riou



REGISTRATION

Online pre-registration to the conference, the gala dinner, all excursions and activities now open on the conference website <https://ece11.univ-lyon1.fr>

Please note that it will not be possible to register (or pay for registration) during the conference.

The registration fee to the conference includes the abstract volume, the ice breaker reception, the coffee breaks, the four lunches, full access to university collections during the conference, and tickets for public transportation in Lyon.

Accompanying persons are welcome to all social events and mid-conference activities.

Registration Fees to the conference:

Junior participants <i>(undergraduate and PhD students, post-doctoral fellows, unemployed researchers)</i>	200 € before July, 15 th	300 € after July, 15 th
Senior participants	300 € before July, 15 th	400 € after July, 15 th

Other registrations fees:

Pre-conference excursion (Oct., 11-15 th)	to be announced in the 3 rd circular
Lyon Aquarium (Oct. 18 th)	15 €
Field excursion to Ardèche (Oct. 18 th)	80 €
Gala dinner (Oct. 19 th)	80 €



IMPORTANT DATES

January 31st, 2023

First Circular

March 10th, 2023

Deadline for suggestions for workshops and scientific sessions

Second Circular

Opening of abstract submission

Opening of pre-registrations

March 31st, 2023

Opening of registrations for conference and excursions

May 15th, 2023

Deadline for abstract submission

June 15th, 2023

Decisions on abstracts

Deadline for registration to pre- and mid-conference excursions

June 30th, 2023

Third Circular, with full-program of conference and excursions

July 15th, 2023

Deadline for early-bird registrations

March 31st, 2024

Deadline for submission of manuscripts to the proceedings volume in *Cahiers de Biologie Marine*



Lyon is the third-largest city and the second-largest urban area of France. It is located at the confluence of the rivers Rhône and Saône, about 500 km southeast of Paris. Former capital of the Gauls at the time of the Roman Empire, birthplace of the cinema (Lumière brothers) in the late 19th century, Lyon is now recognized for its cuisine and gastronomy, as well as for its historical and architectural landmarks: e.g. the districts of Old Lyon, the Fourvière hill, the Presqu'île and the slopes of the Croix-Rousse that are registered on the UNESCO World Heritage List. For those interested in the Rugby World Cup, Lyon is hosting two matches the week before the pre-conference excursion: New Zealand - Uruguay (October 5th, 2023) and France - Italy (October 6th, 2023).

Its central position in France makes it very easy to reach by any means of transportation.

By train

Lyon has three main train stations (Part-Dieu, Perrache and Vaise stations) that are linked to many French and European cities (e.g. Paris-Lyon = 2h; Geneva-Lyon = 2h).

By plane

The Lyon Saint Exupéry airport is situated about 20 km east of the city centre and is connected to the main train station (Part Dieu) by the Rhône Express tramway (less than 30 min trip; departure every 15 minutes from 4.25am to midnight). The airport is connected to most major European cities.

By car

The central position of Lyon makes it also easy to reach it by car. But note that, in the city, it is difficult to find a parking spot and parking fees are expensive. Parking close to the conference venue is much cheaper/easier.

Public transport in Lyon

In your conference bag, you will be given five daily passes that will allow you to use freely the public transports of the city during all the conference.



CONFERENCE VENUE

The conference will be held next in the same building (Darwin) as the **Zoological and the Palaeontological Collections**.

The venue is situated just in front of the tramway T1 & T4 stop "Université Lyon 1", which is three stops away from the Metro lines A and B station "Charpennes".



The Charles Depéret lecture hall (250 seats) is equipped with computers, video projectors, and video cameras. Free wifi connection will be available in the lecture hall and in the congress building. Smaller rooms for meetings and workshops, equipped with computers and video projectors will be also available.

The University of Lyon Zoological collections are world-famous for hosting the collections of Pr. René Koehler (1860–1931), comprising over 800 vials containing echinoderm specimens (including 8 holotypes) collected during the sea campaign of the Caudan (1895) in the Gulf of Gascogne. The University of Lyon is also hosting the second largest palaeontological collections in France (after the Muséum national d'Histoire naturelle in Paris). They are hosting over 1,800 types and figured specimens of fossil echinoderms (e.g. Barrande, Caillet, Cotteau, Lissajous, Sayn, Thorall, de Verneuil, Vizcaino collections). The Zoological and Palaeontological collections will be closely associated to the conference, and will remain accessible to all participants before, during and after the meeting.

ACCOMMODATION

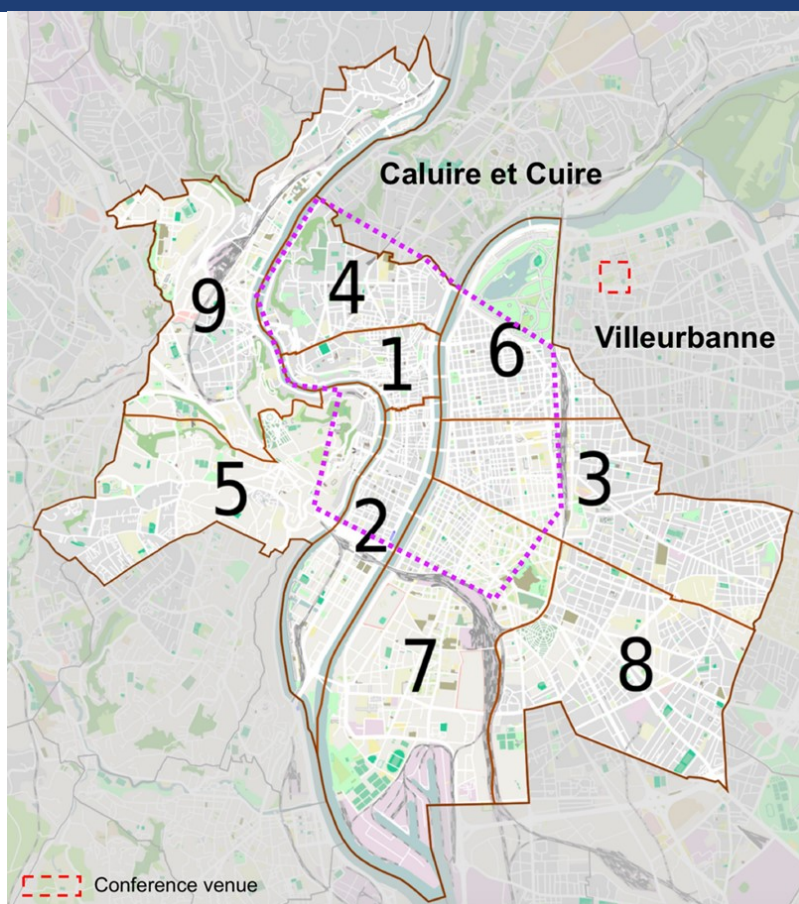
Lyon is an important touristic destination that can offer all kind of accommodations, from luxury hotels to bed & breakfast and hostels.

Rooms can be booked easily online on websites such as <http://www.booking.com> or www.tripadvisor.fr

We suggest choosing a hotel near the city centre from which you can reach anywhere in the city (including the conference venue) in less than 30 min. The map of Lyon's districts below shows the nicest parts of the city circled in purple. You may also find cheaper accommodation in Villeurbanne and Caluire-et-Cuire.

We will offer some discounts in a selection of hotels (more information will be provided on our website).

Please note that accommodation booking and payment cannot be taken by 11th ECE organisers.



CONTACT



<https://ece11.univ-lyon1.fr/en>



ece11@univ-lyon1.fr



Université Claude Bernard Lyon 1

Cellule Congrès - ECE11

Bâtiment GEODE - R1

43, bd du 11 Novembre 1918

69622 Villeurbanne Cedex, FRANCE

+33 (0) 4 72 43 35 90

Université Claude Bernard



Lyon 1

OSU



Observatoire
de Lyon

Congrès



Lyon 1



**LABEX
LIO**

UNIVERSITÉ DE LYON



Laboratoire de Géologie de Lyon
Terre Planètes Environnement

BIOGÉOSCIENCES

